

Alternatives

Council on Environmental Quality regulations and FAA Order 1050.1D, *Policies and Procedures for Considering Environmental Impacts*, provide guidance on the consideration of alternatives in an Environmental Impact Statement (EIS). The EIS identifies and considers reasonable alternatives to accomplish the goals of the proposed project. The range of alternatives includes the preferred alternative, no action alternative, and other alternatives. Other alternatives could include different locations, site configurations, phasing of activities, or a combination of these.

Preferred Alternative

The preferred location for the proposed launch facility is the Clinton-Sherman Industrial Airpark (CSIA).

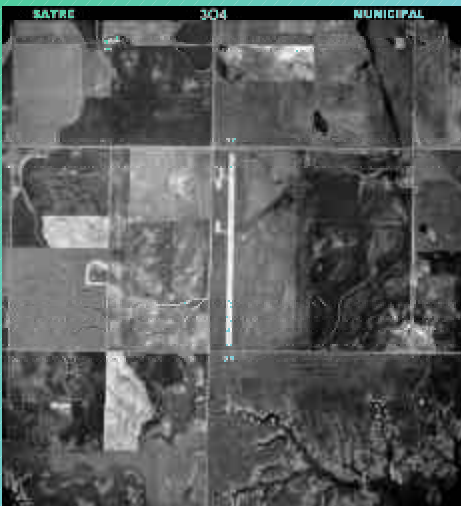
No Action Alternative

Under the no action alternative, the FAA would not issue a launch site operator license and there would be no commercial launches from western Oklahoma.

Alternative Locations

Alternative locations identified for the proposed launch facility include existing airports in Sayre, Hobart, and Frederick.

Sayre



Additional Airport Information
 Lights: MIRL
 Fuel: 100LL
 Radio: CTAF
 Owner: City of Sayre
 (580) 928-2260
 Latitude: 35-10-03.188N
 Longitude: 99-39-28.345W
 Elevation: 1,937 feet
 Attended: NO
 Approaches: NO

Hobart

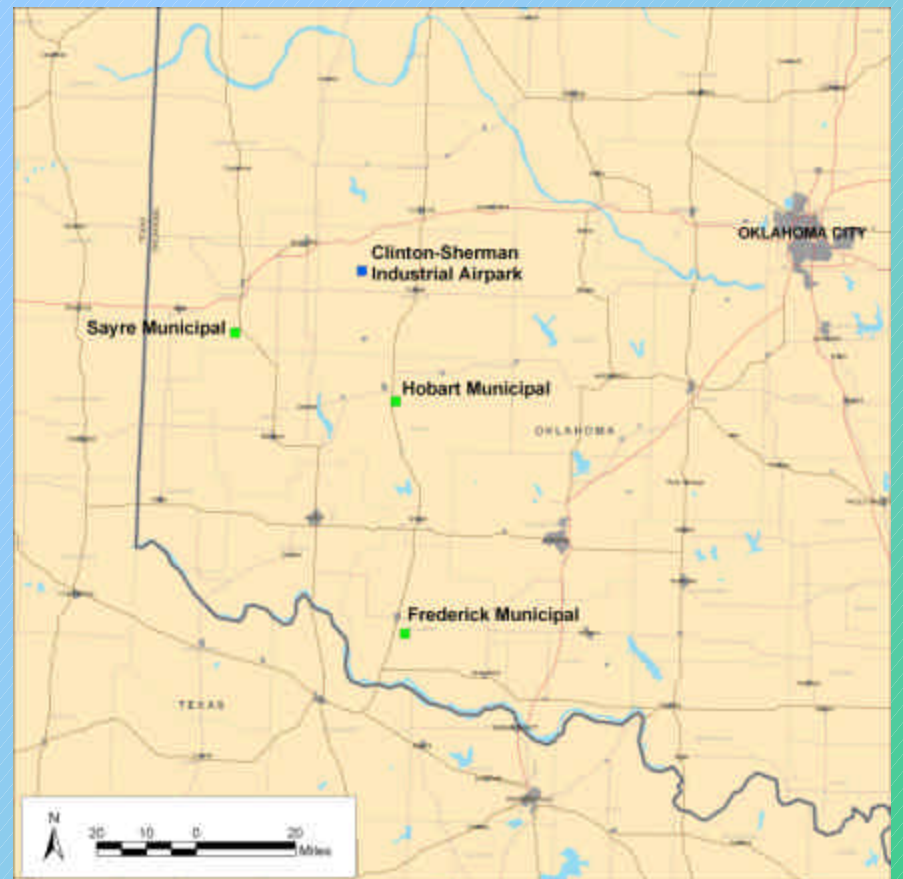


Additional Airport Information
 Lights: Non-Standard -
 Rwy 17/35
 Fuel: 100LL
 Radio: CTAF
 Owner: City of Hobart
 (580) 726-3100
 Latitude: 34-59-28.707N
 Longitude: 99-03-04.869W
 Elevation: 1,564 feet
 Attended: 24 hours
 Approaches: GPS-Rwy 17
 VOR, GPS-Rwy 35

Frederick



Additional Airport Information
 Lights: MIRL-Rwy
 17R/35L
 Fuel: 100LL
 Radio: 122.8
 Owner: City of Frederick
 (580) 335-7551
 Latitude: 34-21-07.901N
 Longitude: 98-59-04.568W
 Elevation: 1,255 feet
 Attended: Mon-Sat 0800-1700
 Sun 1300-1700
 Approaches: NDB-222,
 GPS-Rwy 35L



Other Alternatives

Other alternatives may include phasing operations or restricting the range of proposed operations or implementing alternative site configurations.

NOTE: AIRPORT DATA AND FACILITIES - Information Source - Oklahoma Airport Directory – 1999